

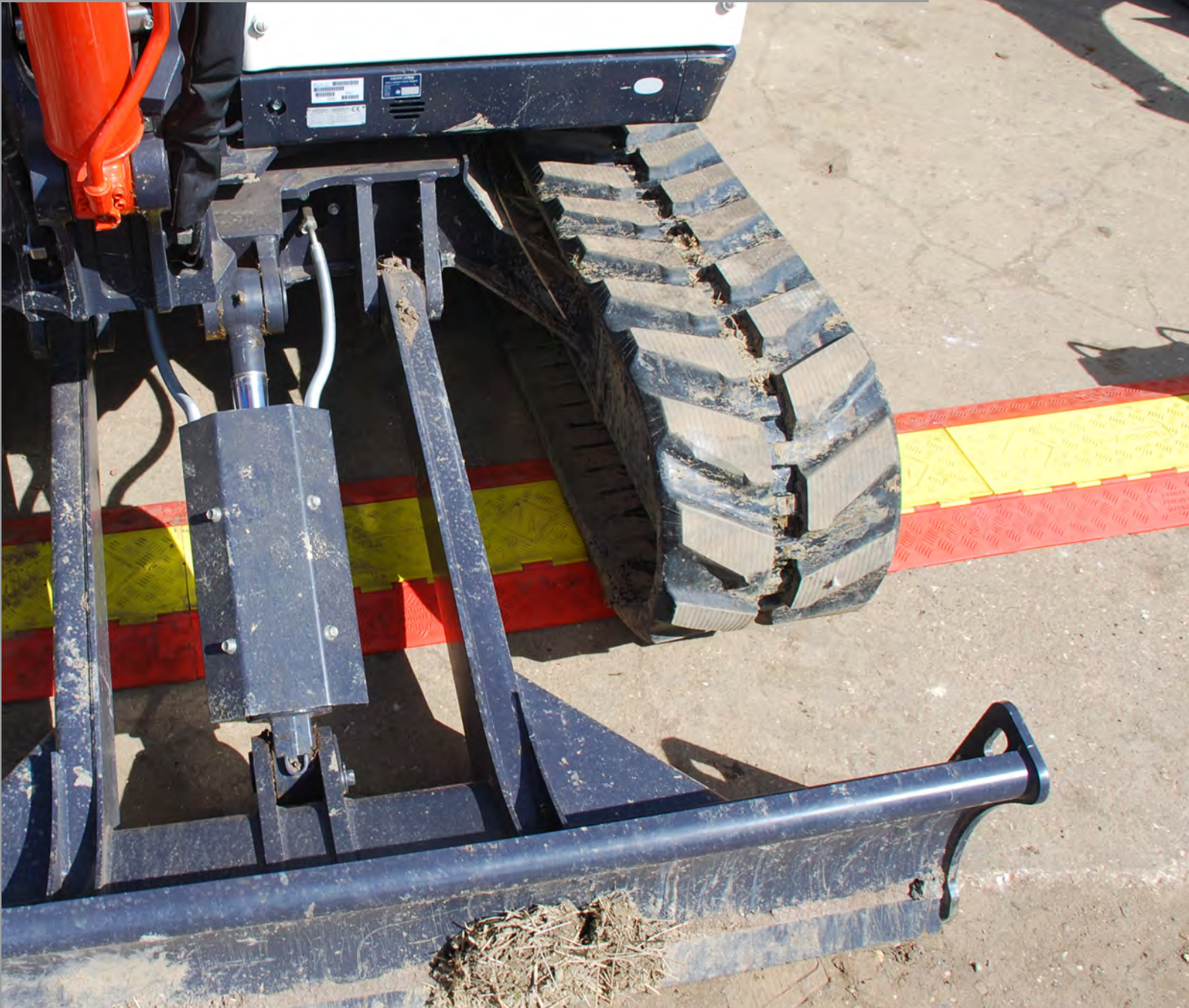


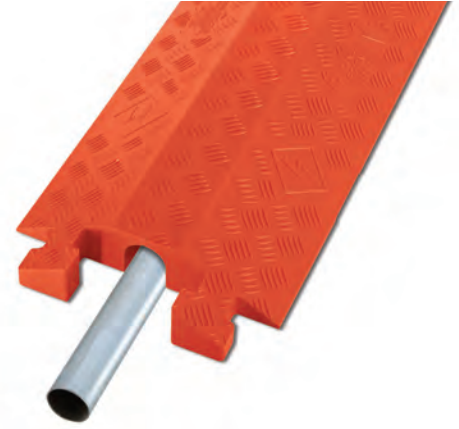
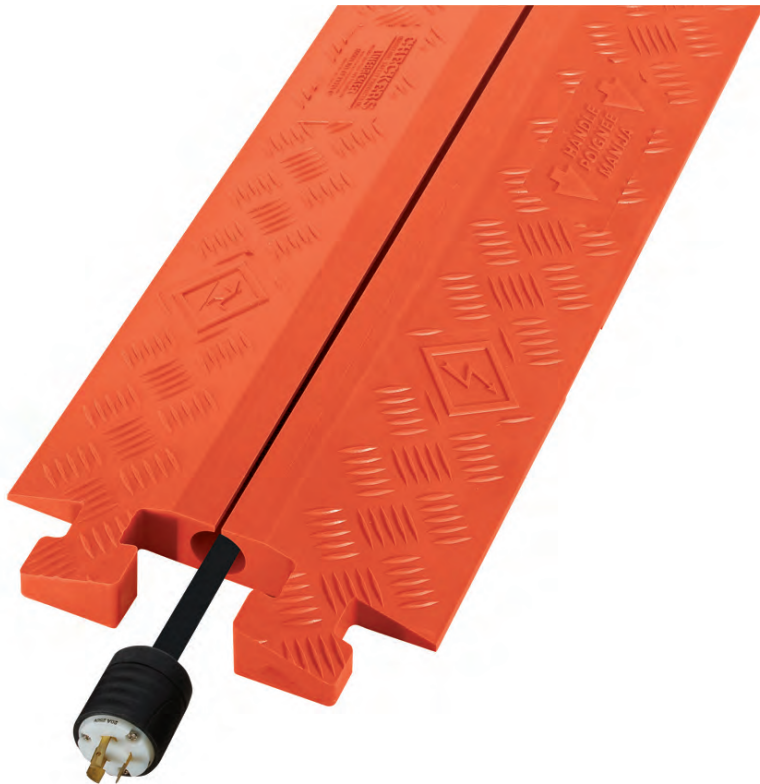
**CHECKERS**

Justrite Safety Group

# GENERAL PURPOSE 1-CHANNEL CABLE PROTECTOR

PRODUCT INFORMATION BROCHURE





PICTURED: CP1X225-GP-DO IN-USE (TOP); CP1X125-GP IN-USE (LEFT)

Checkers™ Cable Management offers the most extensive line of high performance cable/hose protection products in the world. These durable cable protection systems provide a safer method of passage for pedestrian traffic, vehicles and heavy duty equipment while protecting valuable electrical cables, cords and hose lines from damage.

To fit the needs of a wide variety of applications, we offer lidded models, drop over models, open top models, and low profile models constructed from all-weather polyurethane. We also offer rubber duct models for light applications.

- **World's largest cable protector manufacturer**
- **Checkers™ cable management systems are manufactured in the USA in Broomfield, CO**
- **We offer extensive accessories, such as ADA/DDA compliant access ramps, protector bridges, 45 & 90 turns and end caps**
- **Polyurethane construction is lighter and more durable than rubber imitations in extreme weather conditions**
- **Universal safety colors alerting all type of traffic to the product's presence**
- **Satisfies state and federal regulatory agencies**
- **Customized solutions, including logos molded into the product**
- **Multiple channel options so each cable and hose can have its own dedicated channel**
- **Non-conductive material insulates and protects cords/cable, as well as people**



## 1-CHANNEL GENERAL PURPOSE CABLE

**PROTECTOR** offers a quick solution to protect minimal runs of cable and hose lines. These models provide solutions for heavy duty, high load bearing operations as well as lighter duty, general purpose needs.

**Material:** UV Stabilized Polyurethane

- CP1X125 will protect cables and hoses up to 1.25" in outside diameter
- CP2X225 will protect cables and hoses up to 2.25" in outside diameter
- Patented T-Connectors to extend to any length
- Drop Over or Split Top models available
- All-weather polyurethane construction
- Modular interlocking design is lightweight and easy to transport, setup, disassemble, and store
- The CP1X125 features a load capacity of 23,400 lb./Axle (10,614 kg)
- The CP2X225 features a load capacity of 17,000 lbs./Axel (7,711 kg)

**⚠ WARNING:** This product can expose you to chemicals including Carbon Black, Titanium Dioxide, Formaldehyde, and Benzyl Butyl Phthalate, which are known to the State of California to cause cancer and birth defects or other reproductive harm. For more information go to [www.P65Warnings.ca.gov](http://www.P65Warnings.ca.gov).



MODEL: CP1X125-GP-DO

### APPLICATIONS

- Civil Engineering and Construction
- Mining
- Military Sites
- Infrastructure and Utilities Maintenance
- Transmission
- Oil and Gas

## SPECIFICATIONS

**1.25" DROP OVER**  
MODEL: CP1X125-GP-DO

**1.25" SPLIT TOP**  
MODEL: CP1X125-GP

**2.25" DROP OVER**  
MODEL: CP1X225-GP-DO

**2.25" SPLIT TOP**  
MODEL: CP1X225-GP



Model	Length	Width	Height	Channel Width	Maximum Outside Diameter	Weight
CP1X125-GP	36 in. (91.44 cm)	11.5 in. (29.21 cm)	1.6 in. (4.06 cm)	1.25 in. (3.18 cm)	1.25 in. (3.18 cm)	13 lb. (5.9 kg)
CP1X125-GP-DO	36 in. (91.44 cm)	11.5 in. (29.21 cm)	1.6 in. (4.06 cm)	1.25 in. (3.18 cm)	1.25 in. (3.18 cm)	13 lb. (5.9 kg)
CP1X225-GP	36 in. (91.44 cm)	14.25 in. (36.19 cm)	3 in. (7.62 cm)	2.25 in. (5.75 cm)	2.25 in. (5.75 cm)	19 lb. (8.6 kg)
CP1X225-GP-DO	36 in. (91.44 cm)	14.25 in. (36.19 cm)	3 in. (7.62 cm)	2.25 in. (5.75 cm)	2.25 in. (5.75 cm)	19 lb. (8.6 kg)





**CHECKERS™**

620 Compton St  
Broomfield, CO 80020

**PHONE:** (800) 438-9336

**FAX:** (720) 890-4858

**EMAIL:** [sales@checkers-safety.com](mailto:sales@checkers-safety.com)

[www.checkers-safety.com](http://www.checkers-safety.com)

A PRODUCT OF:



Justrite Safety Group is the leading source of safety equipment for flammables and hazardous materials storage and handling, asset protection, environmental protection spill containment, absorbents, specialized chemical storage, cable management, safety showers and eye/face washes, matting, and vehicle safety equipment. Learn more at [Justrite.com](http://Justrite.com), [Checkers-safety.com](http://Checkers-safety.com), and [Notrax.com](http://Notrax.com).