



CHECKERS

Justrite Safety Group

VEHICLE & MOTION SAFETY

PRODUCT OVERVIEW BROCHURE



WHEEL CHOCKS

Checkers™ wheel chocks comply with the safety requirements of a variety of industries and ensure a safe working environment while vehicles are at rest. Offered in a variety of styles, wheel chocks provide a safe chocking solution for any type of vehicle. Checkers chocks were engineered in collaboration with safety experts to work with a wide range of ground equipment, commercial, and military vehicles.



MINING CHOCKS

Model # MC3000

- Lightweight with tough urethane construction
- Optional studs available for snow and ice
- Chocking protocols imprinted on back of chock

WARNING: This product can expose you to chemicals including Carbon Black, which is known to the State of California to cause cancer and birth defects or other reproductive harm. For more information go to www.P65Warnings.ca.gov.



HEAVY-DUTY CHOCKS

Model # MC3011

- Tough urethane construction
- Mounting hole for ropes or chains
- Designed for haul trucks and heavy equipment
- Lightweight compared to steel and aluminum counterparts

WARNING: This product can expose you to chemicals including Carbon Black, which is known to the State of California to cause cancer and birth defects or other reproductive harm. For more information go to www.P65Warnings.ca.gov.



ALL-TERRAIN CHOCKS

Model # AT3512

- Lightweight with tough urethane construction
- Chocking protocols imprinted on back of chock
- Complies with SAE-J348, NFPA 1901, and NFPA 1906 Standards

WARNING: This product can expose you to chemicals including Carbon Black, which is known to the State of California to cause cancer and birth defects or other reproductive harm. For more information go to www.P65Warnings.ca.gov.

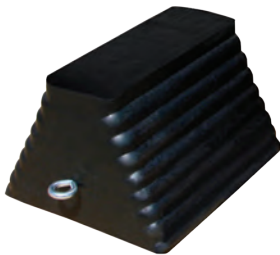


GENERAL-PURPOSE CHOCKS

Model # UC1700

- Oil and chemical resistant
- Designed for utility vehicles
- Mounting hole for ropes, chains or brackets
- Mounting brackets available
- Recessed carrying handle

WARNING: This product can expose you to chemicals including Acrylonitrile and Styrene, which are known to the State of California to cause cancer and birth defects or other reproductive harm. For more information go to www.P65Warnings.ca.gov.



RUBBER CHOCKS

Model # RC915

- Either side can be positioned against tire
- Ideal for keeping truck trailers in place during loading or unloading
- Durable rubber construction



AVIATION CHOCKS

Model # AC4600

- For mid-size to large aircraft
- Impact-absorbing, lightweight urethane
- Weather and abrasion resistant
- Resistant to aircraft fuels, oils, and lubricants

WARNING: This product can expose you to chemicals including Carbon Black, Titanium Dioxide, Formaldehyde, and Benzyl Butyl Phthalate, which are known to the State of California to cause cancer and birth defects or other reproductive harm. For more information go to www.P65Warnings.ca.gov.



TRAFFIC AND PARKING LOT SAFETY SOLUTIONS

Traffic safety products are efficient, high-quality parking lot safety solutions. Designed for speed reduction, these solutions keep roads and parking lots safe for both motorists and pedestrians. Speed bumps, speed humps, and car stops are long lasting, easy to install, and environmentally-friendly.



RUBBER SPEED HUMP

Model # 23500V

- Slows traffic to 10-15 mph
- Interlocking design expands to any road width
- Maintains continuous traffic flow
- Made from vulcanized rubber
- Anti-skid surface
- **⚠ WARNING:** Below



RUBBER SPEED BUMP

Model # 26111

- Slows traffic to 2-5 mph
- Made from 100% recycled tires
- In-molded reflective tape and cat eye reflectors enhance visibility
- Can be installed for temporary or permanent use
- **⚠ WARNING:** Below



RUBBER PARKING STOP

Model # 16101Y

- Helps protect the front vehicles
- Prevents damage to structures
- Highly visible & extremely durable
- Ideal for indoor or outdoor residential parking
- **⚠ WARNING:** Below



RUBBER WALL GUARD

Model # CG900

- High-impact virgin rubber
- Long lasting and cost efficient
- Easily installed by 1 person
- Used for temporary or permanent installation
- High visibility

⚠ WARNING: This product can expose you to chemicals including Arsenic, Cobalt, Cadmium, Lead, Chromium, Nickel Compounds, which are known to the State of California to cause cancer and birth defects or other reproductive harm. For more information go to www.P65Warnings.ca.gov.

WARNING WHIPS

Checkers™ warning whips are designed to increase the visibility of utility vehicles and small trucks on mine sites. Without a whip for extra visibility, haul truck operators can have difficulty seeing these smaller vehicles, potentially leading to accidents. Both lighted and non-lighted models are available, with many different mounting options.



LIGHTED WARNING WHIPS

Model # Various

- Extensive lighting options with a variety of flash pattern options
- Fiberglass resin designed to withstand harsh environments
- Waterproof LED housing to improve longevity

⚠ WARNING: This product can expose you to chemicals including Nickel Compounds, which is known to the State of California to cause cancer and birth defects or other reproductive harm. For more information go to www.P65Warnings.ca.gov.



NON-LIGHTED WARNING WHIPS

Model # Various

- Fiberglass resin construction designed to withstand harsh environments
- Most weather-resistant whip on the market





CHECKERS™

620 Compton St.
Broomfield, CO 80020

PHONE: (800) 438-9336

FAX: (720) 890-4858

EMAIL: sales@checkers-safety.com

www.checkers-safety.com

Ver: 5/19

A PRODUCT OF:



Justrite Safety Group is the leading source of safety equipment for flammables and hazardous materials storage and handling, asset protection, environmental protection spill containment, absorbents, specialized chemical storage, cable management, safety showers, eye/face washes, matting, and vehicle safety equipment. Learn more at Justrite.com, Checkers-safety.com, and Notrax.com.