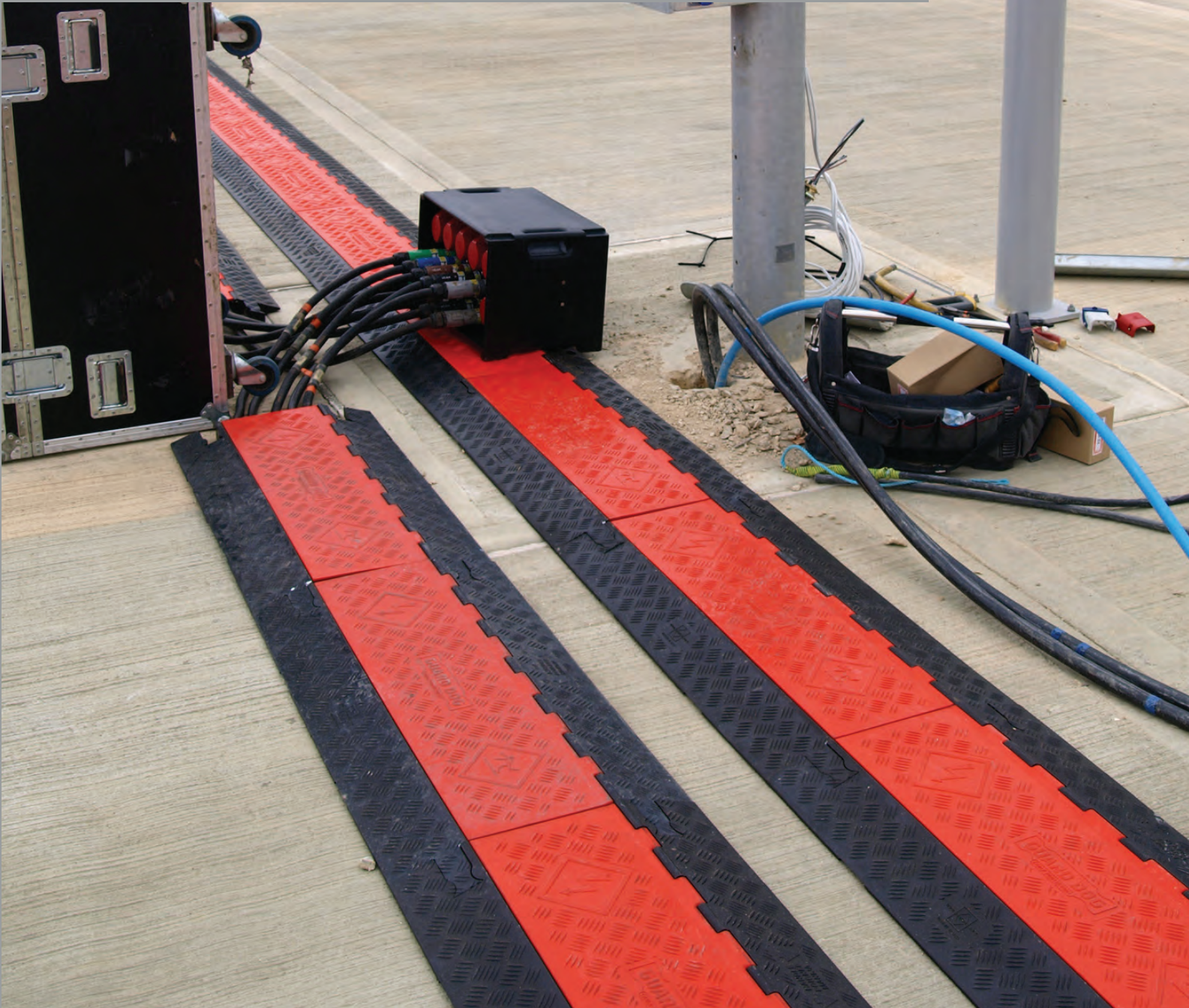




Justrite Safety Group

GUARD DOG SERIES FLAT EDGE 5-CHANNEL CABLE PROTECTOR

PRODUCT INFORMATION BROCHURE





PICTURED: GD5X125 IN USE (LEFT)
GD3X225 IN USE (TOP)

Checkers™ Cable Management offers the most extensive line of high performance cable/hose protection products in the world. These durable cable protection systems provide a safer method of passage for pedestrian traffic, vehicles and heavy duty equipment while protecting valuable electrical cables, cords and hose lines from damage.

To fit the needs of a wide variety of applications, we offer lidded models, drop over models, open top models, and low profile models constructed from all-weather polyurethane. We also offer rubber duct models for light applications.

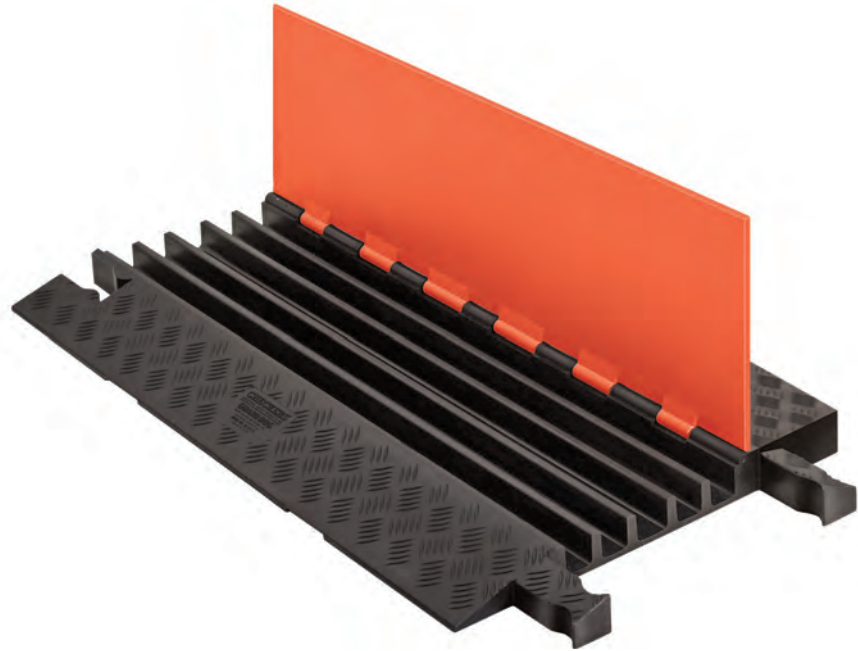
- **World's largest cable protector manufacturer**
- **Checkers™ cable management systems are manufactured in the USA in Broomfield, CO**
- **We offer extensive accessories, such as ADA/DDA compliant access ramps, protector bridges, 45 & 90 turns and end caps**
- **Polyurethane construction is lighter and more durable than rubber imitations in extreme weather conditions**
- **Universal safety colors alerting all type of traffic to the product's presence**
- **Satisfies state and federal regulatory agencies**
- **Customized solutions, including logos molded into the product**
- **Multiple channel options so each cable and hose can have its own dedicated channel**
- **Non-conductive material insulates and protects cords/cable, as well as people**

GUARD DOG SERIES FLAT EDGE 5-CHANNEL CABLE PROTECTORS fit flush to walls, stages, curbs, or any vertical wall to eliminate possible trip and fall hazards. Protects valuable electrical cables and hose lines from damage. Modular interlocking design is ideal for use in amusement parks, entertainment venues, sporting events, and most public, commercial, industrial, construction, and utility applications.

Material: UV Stabilized Polyurethane

- Fits flush to walls, stages, curbs, or any vertical wall
- Protects cables and hoses up to 1.325" outside dia.
- Dog Bone Connectors to extend to any desired length
- Reinforced hinged lid for easy cable placement
- Features a load capacity of 21,000 lb./Axle (9,526 kg)
- All-weather polyurethane construction
- Available with an orange or black lid

⚠️ WARNING: This product can expose you to chemicals including Carbon Black, Titanium Dioxide, Formaldehyde, and Benzyl Butyl Phthalate, which are known to the State of California to cause cancer and birth defects or other reproductive harm. For more information go to www.P65Warnings.ca.gov.



MODEL: GD5X125

APPLICATIONS

- Civil Engineering
- Construction
- Military Sites
- Infrastructure and Utilities Maintenance
- Transmission
- Oil and Gas

SPECIFICATIONS

Model	Length	Width	Height	Channel Width	Maximum Outside Diameter	Weight
GDFE5X125	36 in. (91.4 cm)	19.75 in. (50.2 cm)	1.875 in. (4.76 cm)	1.339 in. (3.4 cm)	1.325 in. (3.37 cm)	26.1 lb. (11.9 kg)





CHECKERS™

620 Compton St
Broomfield, CO 80020

PHONE: (800) 438-9336

FAX: (720) 890-4858

EMAIL: sales@checkers-safety.com

www.checkers-safety.com

A PRODUCT OF:



Justrite Safety Group is the leading source of safety equipment for flammables and hazardous materials storage and handling, asset protection, environmental protection spill containment, absorbents, specialized chemical storage, cable management, safety showers and eye/face washes, matting, and vehicle safety equipment. Learn more at Justrite.com, Checkers-safety.com, and Notrax.com.