



CHECKERS

Justrite Safety Group

RC915 RUBBER WHEEL CHOCK

PRODUCT INFORMATION BROCHURE





PICTURED: RC915 IN-USE

Checkers™ wheel chocks comply with the safety requirements of a variety of industries and ensure a safe working environment while your vehicles are at rest. Offered in a variety of styles, our wheel chocks provide a safe chocking solution for any type of vehicle.

Checkers™ wheel chocks were engineered in collaboration with safety experts to work with a wide range of ground equipment, commercial, and military vehicles. Whether you are chocking a fully-loaded 400-ton haul truck or a utility trailer, we have the wheel chocks you need to safely secure your vehicle and meet compliance standards.

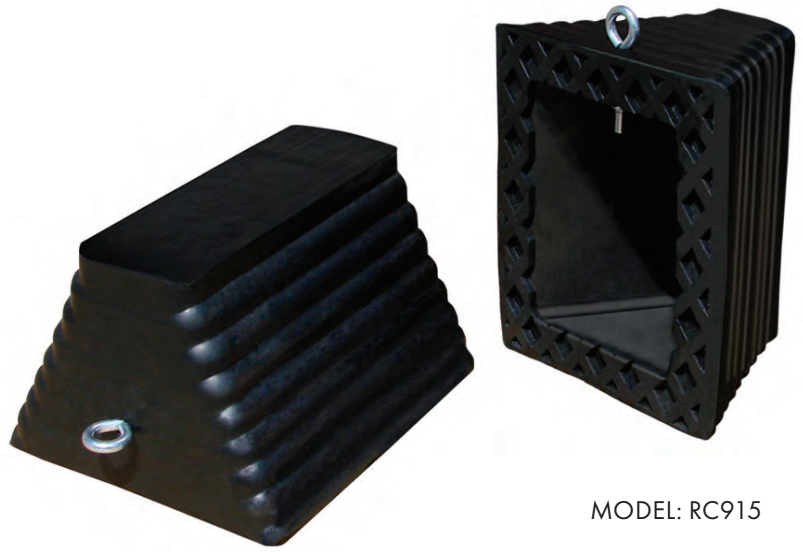
- **We are one of the largest manufacturers of wheel chocks in the world**
- **We manufacture the most popular wheel chocks in the highly-demanding mining industry**
- **Checkers™ wheel chocks are manufactured in the USA, in Broomfield, Colorado**
- **Polyurethane wheel chocks are resistant to extreme weather conditions, tears, abrasions, oils, and solvents**
- **Polyurethane chocks are extremely lightweight compared to excessive steel and aluminum counterparts**
- **Long-lasting product life span results in cost savings**
- **Checkers™ produces a wheel chock for virtually every type of tire-based vehicle**
- **Our wheel chocks are engineered to reduce damage to your vehicle's tires**
- **High-visibility safety colors used on most of our wheel chocks**
- **Checkers™ wheel chocks satisfy MSHA, OSHA, SAE, NFPA, and DOT compliance standards**
- **Recessed carrying handles included on most models**
- **Mounting brackets available for most models**

RC915 GENERAL-PURPOSE RUBBER

WHEEL CHOCKS are composed of durable rubber that makes them strong and safe in industrial applications. The RC models are resistant to damage from UV, moisture, salt, and oils. Their traction design grips the tire and road and will not cause tire or pavement damage. The chock design also allows either side to be positioned against tire. This series of chocks is built to suit a variety of applications in the construction, utility, and other commercial industries.

Material: Durable rubber

- Either side can be positioned against tire
- Ideal for keeping truck trailers in place during loading or unloading
- Durable rubber construction
- Ribbed pyramid design
- Resistant to the elements, UV, and oils/solvents



MODEL: RC915

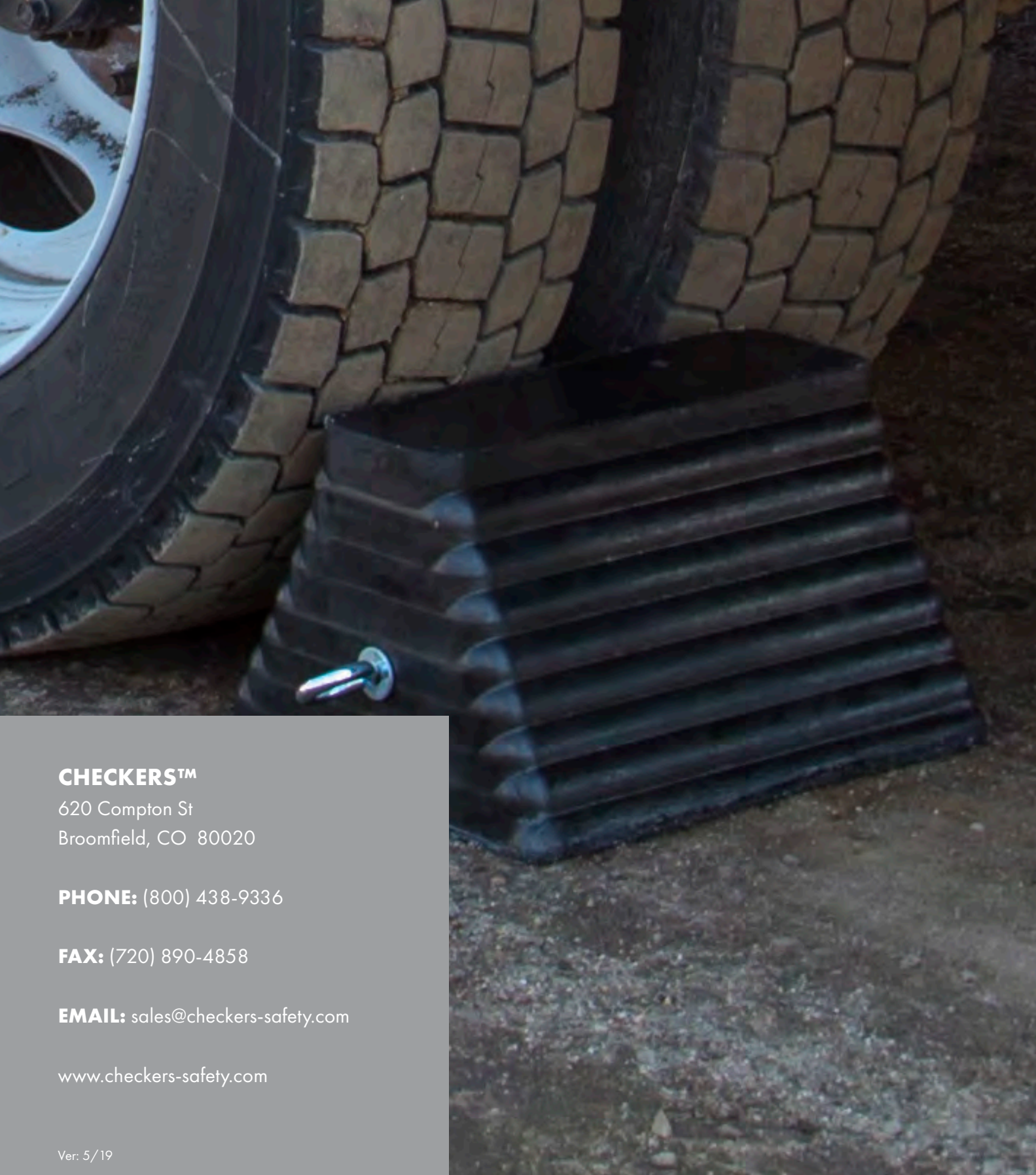
APPLICATIONS

- Civil Engineering and Construction
- Trailers
- Military Sites
- Infrastructure and Utilities Maintenance
- Transmission
- Recreation

SPECIFICATIONS

Model	Description	Length	Width	Height	Weight
RC915	Wheel Chock with Bottom Void	11.5 in. (29.2 cm)	10 in. (25.4 cm)	7.25 in. (18.4 cm)	15 lb. (6.8 kg)





CHECKERS™

620 Compton St
Broomfield, CO 80020

PHONE: (800) 438-9336

FAX: (720) 890-4858

EMAIL: sales@checkers-safety.com

www.checkers-safety.com

Ver: 5/19

A PRODUCT OF:



Justrite Safety Group is the leading source of safety equipment for flammables and hazardous materials storage and handling, asset protection, environmental protection spill containment, absorbents, specialized chemical storage, cable management, safety showers, eye/face washes, matting, and vehicle safety equipment. Learn more at Justrite.com, Checkers-safety.com, and Notrax.com.