



UC Series Wheel Chocks

- Lightweight urethane construction is resistant to weather conditions, oils, fuels, and solvents
- 3rd party tested, certified and trusted by fleets globally
- Ideal for use with over-the-road trucks, trailers, pickups and utility vehicles



UC1210

- Recommended tire diameter 95 in to 165 in (241.3 cm to 419.1 cm)
- For mining and construction haul trucks and support equipment
- Max gross vehicle operating weight up to 245,000 lb or 111,130 kg
- For payloads up to 70 tons* (63,503 kg) use two UC1210
- Recessed carrying handle & mounting hole for ropes, chains or brackets
- Molded-in "How to Use" guidelines

* Ton is the U.S. standard, equivalent to 2,000 lb (907 kg)

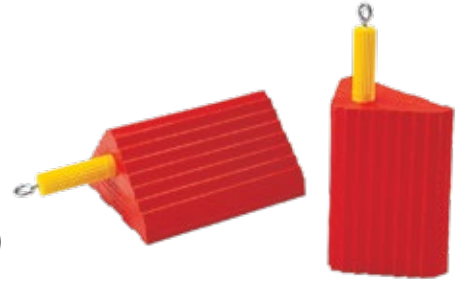


Model	Length	Width	Height	Weight	Color	Prop 65
UC1210	17 in (43.2 cm)	14 in (35.6 cm)	14 in (35.6 cm)	25 lb (11.3 kg)	Orange	⚠

Note: Sizing is subject to a manufacturing variance of ±5%

UC1400

- Recommended tire diameter 27 in to 32 in (68.6 cm to 81.3 cm)
- Standard of the utility industry
- UC1400-4.5 is certified for a gross vehicle operating weight up to 30,000 lb (13,608 kg)
- UC1400-6 is certified for a gross vehicle operating weight up to 60,000 lb (27,216 kg)
- Easy-grip carrying handle & eyebolt for ropes or chains
- Available in singles or pairs (pairs attached with a 48 in long piece of 5/8 in polyester rope)



Model	Length	Width	Height	Weight	Color	Prop 65
UC1400-4.5	10 in (25.4 cm)	8.5 in (21.6 cm)	5 in (12.7 cm)	4.5 lb (2 kg)	Orange	⚠
UC1400-4.5-P (PAIR)				9.5 lb (4.3 kg) (PAIR)		⚠
UC1400-6				6 lb (2.7 kg)		⚠
UC1400-6-P (ROPED PAIR)				12.5 lb (5.7 kg) (PAIR)		⚠

Note: Sizing is subject to a manufacturing variance of ±5%

UC1500

- Recommended tire diameter 32 in to 46 in (81.3 cm to 116.8 cm)
- UC1500-4.5 is certified for a gross vehicle operating weight up to 50,000 lb (22,680 kg)
- UC1500-6 is certified for a gross vehicle operating weight up to 70,000 lb (31,751 kg)
- Recessed carrying handle & mounting hole for ropes or chains
- Available in singles or pairs (pairs attached with a 48 in long piece of 5/8 in polyester rope)



Model	Length	Width	Height	Weight	Color	Prop 65
UC1500-4.5	11.5 in (29.2 cm)	9 in (22.9 cm)	8.5 in (21.6 cm)	4.5 lb (2 kg)	Orange	⚠
UC1500-4.5-P (ROPED PAIR)				9.5 lb (4.3 kg) (PAIR)		⚠
UC1500-6				6 lb (2.7 kg)		⚠
UC1500-6-P (ROPED PAIR)				12.5 lb (5.7 kg) (PAIR)		⚠

Note: Sizing is subject to a manufacturing variance of ±5%

⚠ WARNING: This product can expose you to chemicals including acrylonitrile and styrene, which is known to the State of California to cause cancer and birth defects or other reproductive harm. For more information go to www.P65Warnings.ca.gov.

UC1600

- Recommended tire diameter 27 in to 35 in (68.6 cm to 88.9 cm)
- UC1600 is certified for a gross vehicle operating weight up to 40,000 lb (18,144 kg)
- Recessed carrying handle & mounting hole for ropes or chains
- Available in singles or pairs (pairs attached with a 48 in L piece of 5/8 in polyester rope)



Model	Length	Width	Height	Weight	Color	Prop 65
UC1600	11.25 in (28.6 cm)	8 in (20.3 cm)	8.25 in (21.0 cm)	3.5 lb (1.6 kg)	Orange	⚠
UC1600-P (ROPED PAIR)				7.5 lb (3.4 kg) (PAIR)		⚠

Note: Sizing is subject to a manufacturing variance of ±5%

UC1700

- Recommended tire diameter 27 in to 35 in (68.6 cm to 88.9 cm)
- UC1700 is certified for a gross vehicle operating weight up to 30,000 lb or 13,608 kg
- Recessed carrying handle & mounting hole for ropes or chains
- Available in singles or pairs (pairs attached with a 48 in long piece of 5/8 in polyester rope)



Model	Length	Width	Height	Weight	Color	Prop 65
UC1700	8.5 in (21.6 cm)	7.5 in (19.1 cm)	6.25 in (15.9 cm)	2.0 lb (.91 kg)	Orange	⚠
UC1700-P (ROPED PAIR)				4.5 lb (2 kg) (PAIR)		⚠

Note: Sizing is subject to a manufacturing variance of ±5%

UCTS003

- For light weight general purpose applications
- Grooved, stepped edges help grip and provide more tire traction
- Eyebolt to use as a handle or connect with a rope
- Up to a 20,000 lb load capacity (up to 11% grade)



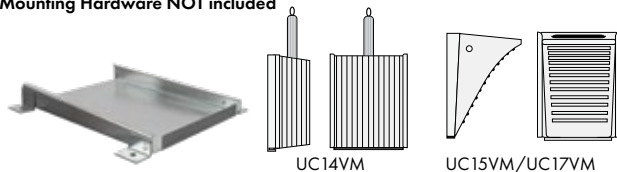
Model	Length	Width	Height	Weight	Color	Prop 65
UCTS003	10 in (25.4 cm)	8 in (20.3 cm)	6 in (15.2 cm)	2.86 lb (1.3 kg)	Orange	⚠

Note: Sizing is subject to a manufacturing variance of ±5%

UC Series Mounting Brackets for UC1400, UC1500 & UC1700 Series Chocks

Vertical Brackets

Mounting Hardware NOT included

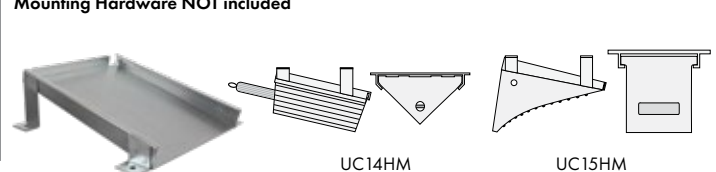


UC14VM

UC15VM/UC17VM

Horizontal Brackets

Mounting Hardware NOT included

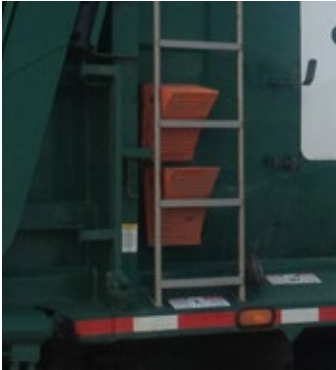


UC14HM

UC15HM

Model	Description	Coating	Weight	Prop 65
UC14VM	Vertical Mounting Bracket for 1400 Series Wheel Chock. 11.88 in x 10.5 in x 2.13 in	Zinc Plated	2.5 lb (1.1 kg)	—
UC14HM	Horizontal Underbody Mounting Bracket for 1400 Series Wheel Chock. 11.75 in x 10.25 in x 4.75 in			—
UC15VM	Vertical Mounting Bracket for 1500 Series Wheel Chock. 11.75 in x 10.25 in x 4.75 in		—	
UC15HM	Horizontal Underbody Mounting Bracket for 1500 Series Wheel Chock. 12 in x 11.5 in x 4.25 in		2.75 lb (1.2 kg)	—
UC17VM	Vertical Mounting Bracket* for 1700 Series Wheel Chock. 10.5 in x 9.25 in x 1.5 in		1.75 lb (.8 kg)	—

⚠ WARNING: This product can expose you to chemicals including acrylonitrile and styrene, which is known to the State of California to cause cancer and birth defects or other reproductive harm. For more information go to www.P65Warnings.ca.gov.



Checkers

620 Compton St
Broomfield, CO 80020

Phone: (800) 438-9336

Fax: (720) 890-4858

Email: sales@checkers-safety.com

Checkers-Safety.com